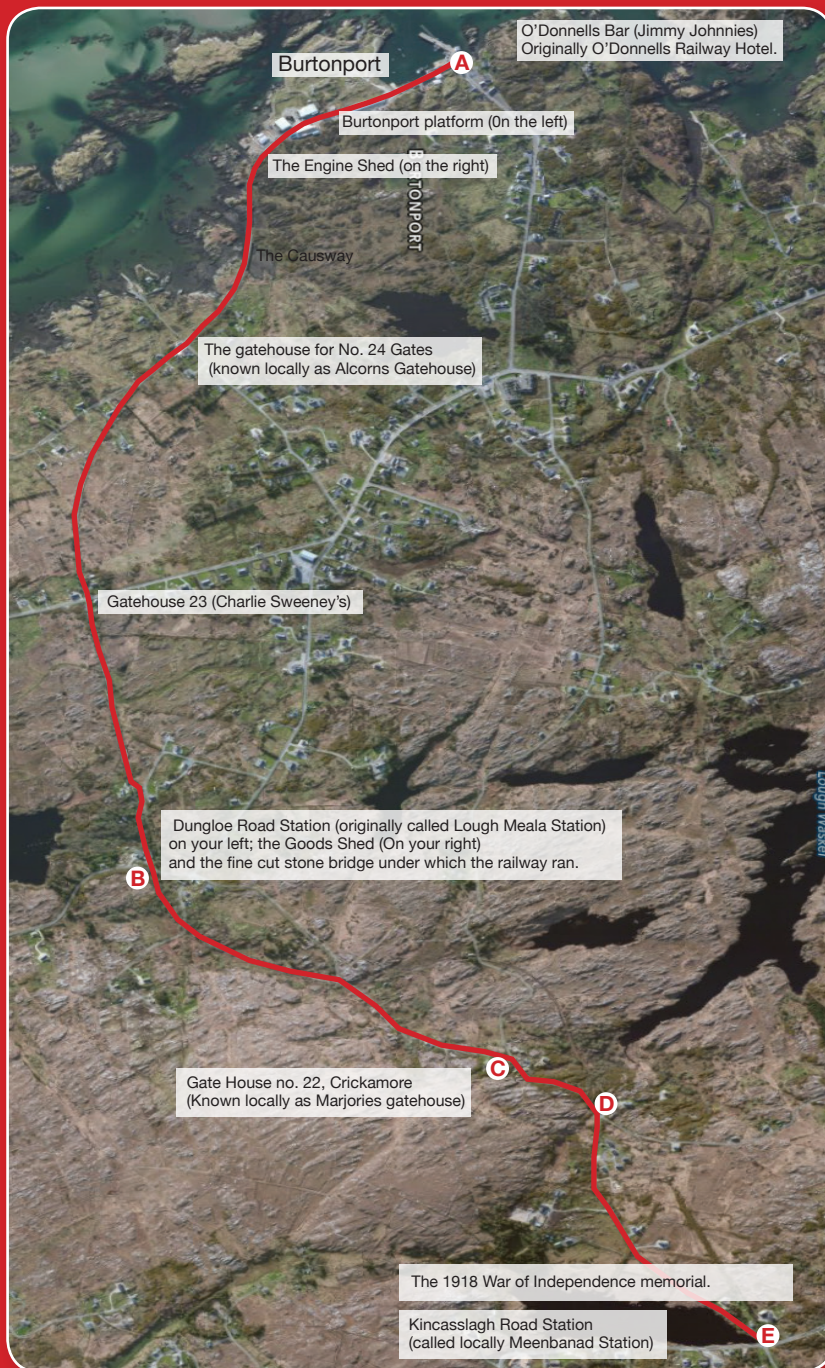


Siúlóid an tSean Bhóthar Ianrainn

The Old Railway Walk



Trail Start	Burtonport Harbour
Trail Finish	Meenbannad Station
Length	ca. 5.5km (11km return to Burtonport)
Time To Complete	1hour (2 hours return)
Terrain	Minor roads & Surfaced track
Format	Linear Walk
Grade	Easy
Way Marking	Red train & Red Directional Arrows on white background
Grid Ref./Map	B717 151/OSI Discovery Series Sheet 1

This beautiful walking trail filled to the brim with spectacular scenery and woodland was originally the route taken by the train which connected Burtonport to Letterkenny between 1903 and 1940. There are many features of the old railway remaining which you can view along the way including: stations, gatehouses, accommodation crossings—the pillars, cuttings, embankments, a bridge, rusty gates and much, much more.

Walk Directions:

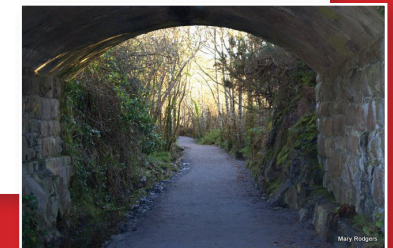
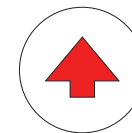
A—B: The walk leaves Burtonport Harbour and leads the walker through the industrial area, past the wind turbine and over the causeway to Alcorn's gate house NO 24, following the red train and red directional arrows marked "The Old Railway Walk". Walking straight ahead past the gatehouse where the surface now changes to a gravel covering, until you meet the main Dungloe Road, across from Sweeney's gatehouse NO 23.

TAKE CARE CROSSING THE ROAD.

B—C: After crossing the road, carry on along the gravel path past Dungloe Road Station, under the bridge, through the ash woodland, past Marjorie's gatehouse NO 22.

C—D: Cross the backroad and continue along the path past the lake until the track turns sharp right and up the steep bank on to the tarred road.

D—E: Turn left and follow the red arrows along the tarred road for ca. 1km to the end of the walk at Meenbannad Station NO 21.



In case of emergency call 999